

Community-Based Alternatives to Incarceration Network of Care

Co-Facilitators:
Dr. Kathleen Van Antwerp & Senta
Greene

- We are presenting a "macro to micro" vision of our Network of Care. This vision is holistic and inclusive (facilities & field) for a continuum of services ushering in a new era of localized juvenile justice founded on community-based services and incarceration alternatives.






- Disclosures: None

Network of Care = Community - Based Alternatives to Incarceration

- Developing community-based alternatives to incarceration using a Network of Care (NOC) model is a crucial approach to reducing recidivism rates and keeping youth out of the juvenile justice system. The Network of Care (NOC) Program serves youth and families needing resources during difficult times. The NOC comprises Care Navigators who link, lift, and leverage community resources to provide concrete support, social connections, and networking to help mitigate adversity and strengthen families. This workshop will feature NOC's current collaborative model with a local probation agency as a framework to link, lift, and leverage community resources to help juveniles, transitional-aged youth (aged 18-25), and their families in need using the Network of Care Program. This program is based on a developmental, mental, behavioral health, and community-based interactive core practice model. In this workshop, professionals will understand and learn ways to guide young people toward better outcomes and ensure they receive the help they need. Every interaction with youth can and should be viewed as a chance to teach new skills and model adaptive behavior.



Welcome to the Experience!

1. Discuss how to create a Network of Care in your community to provide Community-Based Alternatives to Incarceration for youth.

2. Explain the role of a Care Coordinator and Care Navigator in the Network of Care Model

3. Identify how to work collaboratively with your local probation agency

4. Define authentic family engagement through the lens of juvenile justice

Explore the role of Parent Leaders in the NOC model



Brain Activation Question

- What are the top three needs you have as a Probation Officer working with youth/young adults as they re-enter the community?

Ventura County Probation Agency

*Juvenile &
Transitional Age
Youth
13-25 Years
Program Model*



Ventura County Probation Agency

- Transforming and empowering lives to build a strong community
- Network of Care Model will be reflective of the mission & vision of VC Probation Agency
- To promote effective interventions, individual accountability and community well-being



Van Antwerp- Greene 2023

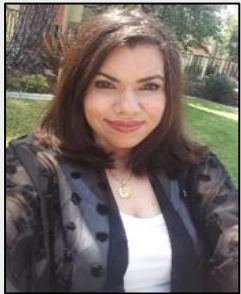
Ventura County Network of Care Navigation Team

Dr. Kathleen Van Antwerp- Executive Director

Senta Greene – Director of Special Projects

Jackie Flores- Ortega- Parents Voices Coordinator

Denise Fritch – Care Coordinator



Jessica Ortiz
Janel Noonkester
Eden Velasquez - Jager

Jasmine Duron

Leah Davis

Tiffany Dixon

Blanca Lozano

Sarah Bozzo

Gabby Ornelas

Manny Arroyo





Values Statement for Network of Care Lifting the Core Values of Probation

- **Collaboration**
We actively build networks of support and strive to create shared solutions on issues impacting our communities.
- **Dedication**
We demonstrate the highest level of integrity, professionalism, and compassion as a committed workforce.
- **Empowerment**
We connect people to resources and opportunities to encourage change and personal responsibility, which are cornerstones to building safe communities.
- **Excellence**
We are innovative, adaptable, and determined to continuously improve.
- **Respect**
We believe in a positive, empowering, and supportive work environment that encourages the sharing of diverse opinions.
- **Support**
We focus on restoration by providing access to trauma-informed services and facilitating healing.



Network of Care Program Highlights

- Probation works collaboratively with the human development team for alternatives to incarceration, community- based connections, and tracking of supports and services through a structured and deliberately organized program.
- There are different pathways for case management work that probation will have access to, including but not limited to education, housing, career and vocation training and support, mental and behavioral health services, and innovative programs linked directly to the research and evidence based informed practices for juvenile justice.
- Each officer will have access to a community navigator or team of navigators to identify such services and supports and to track the outcome of those services and supports, (Ventura County Parents Voices, Network of Care / CAPC)
- Community Connections Series : An educational program model that provides weekly training on a host of topics, including “Life Back Into the Community,” “Building Relationships with Loved Ones from Rupture to Repair,” “Conflict Resiliency.” A team of diverse content experts reflecting the community and juvenile justice reform.
- Focus groups for Officers, Youth, Family and Community Partners.



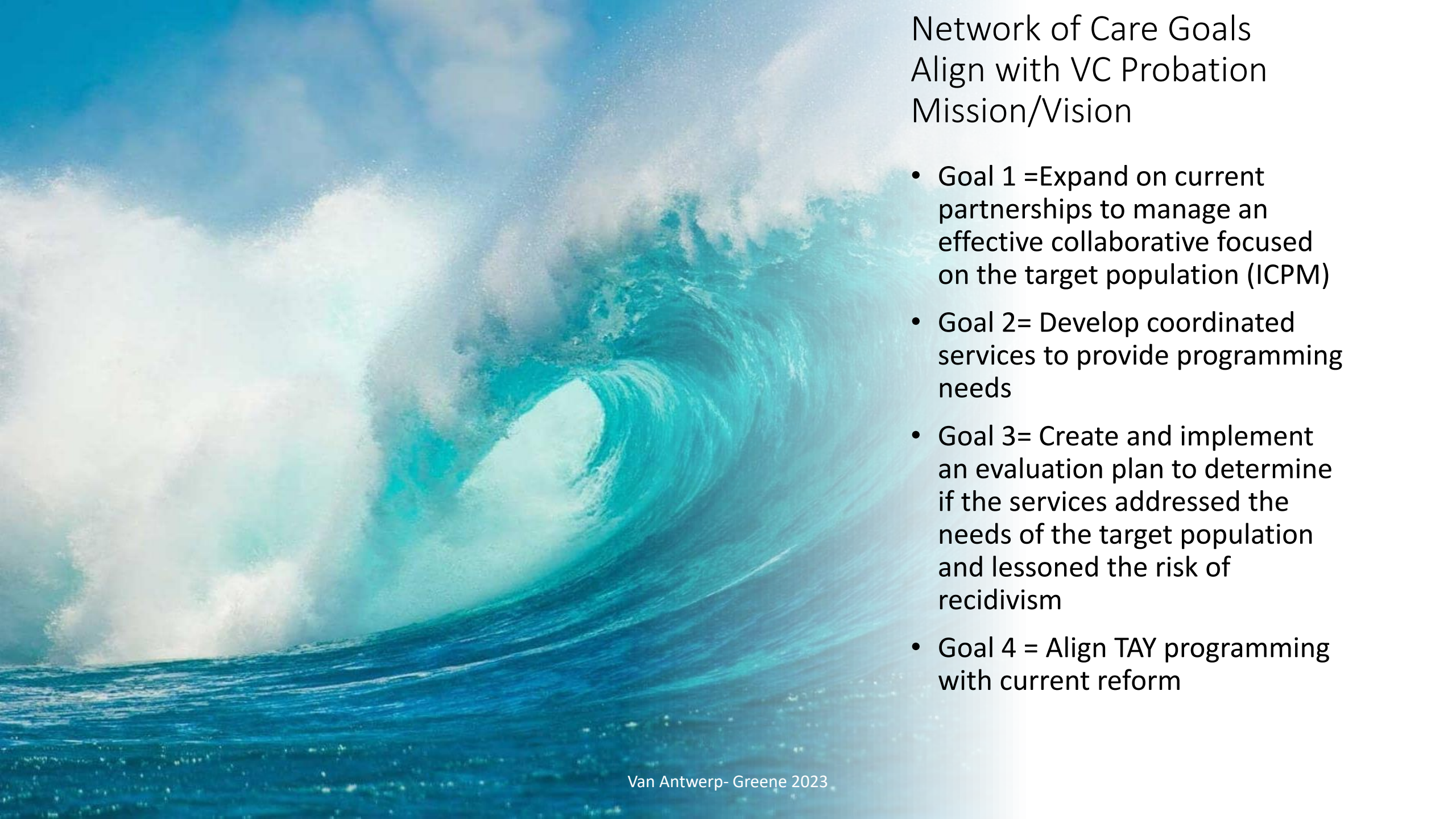
Integrated Core Practice Model (ICPM)

- Released in 2018, in support of the Continuum of Care Reform (CCR) and Pathways to Well-Being efforts, the ICPM is an articulation of the shared values, core components, and standards of practice expected from those serving California's children, youth, and families. ICPM provides practical guidance and direction in the delivery of timely, effective, and collaborative services. Additionally, the ICPM helps create a culturally relevant and trauma-informed systems of care that strengthens the voice and choice of the child, youth, and family and builds consensus around their strengths and needs in service planning and delivery. The practice of working together as a team is at the heart of ICPM and central to the implementation of family-centered practice and CCR.



Ventura County Probation Agency TAY Developmental Milestones

- Approximately 5,500,000 TAY live in California. This group faces unique challenges in development, physical and mental health, housing, education, career training, employment, life skills, and relationships. TAY is particularly vulnerable to various biological, behavioral, and social issues due to difficulties that may arise when transitioning from childhood to adulthood. TAY who are or were placed in out-of-home settings is more likely than youth in the general population to experience physical and mental health conditions, making this transition period more difficult. Furthermore, youth in this age range are aging out of services provided by correctional youth facilities and moving into community-based services, which may need to be more cohesive and developmentally appropriate.
- **Network of Care is designed from a holistic, developmental lens.**

A large, powerful blue wave crashing over a rocky shore under a bright sky. The wave is curling over, creating a tunnel-like shape. The sky is bright blue with some white clouds. The water is a deep blue color.

Network of Care Goals Align with VC Probation Mission/Vision

- Goal 1 =Expand on current partnerships to manage an effective collaborative focused on the target population (ICPM)
- Goal 2= Develop coordinated services to provide programming needs
- Goal 3= Create and implement an evaluation plan to determine if the services addressed the needs of the target population and lessened the risk of recidivism
- Goal 4 = Align TAY programming with current reform



Critical Inclusive Considerations

- Disabilities (Students eligible for services 18-22 years old with active IEPs and referrals for or clients of Regional Center for the lifespan)
- LGBTQ+
- Dual Language Learners
- Homeless-TAY Tunnel

Essential Elements of the Comprehensive Program and Design Model

Juvenile Justice Facilities


Proactive Programming including critical inclusive considerations

Community Navigation for Re-entry and Re-Integration

Resources for TAY, Community, and Family Support

Reflective Supervision, Professional Learning and Development for POs and Transition Specialist

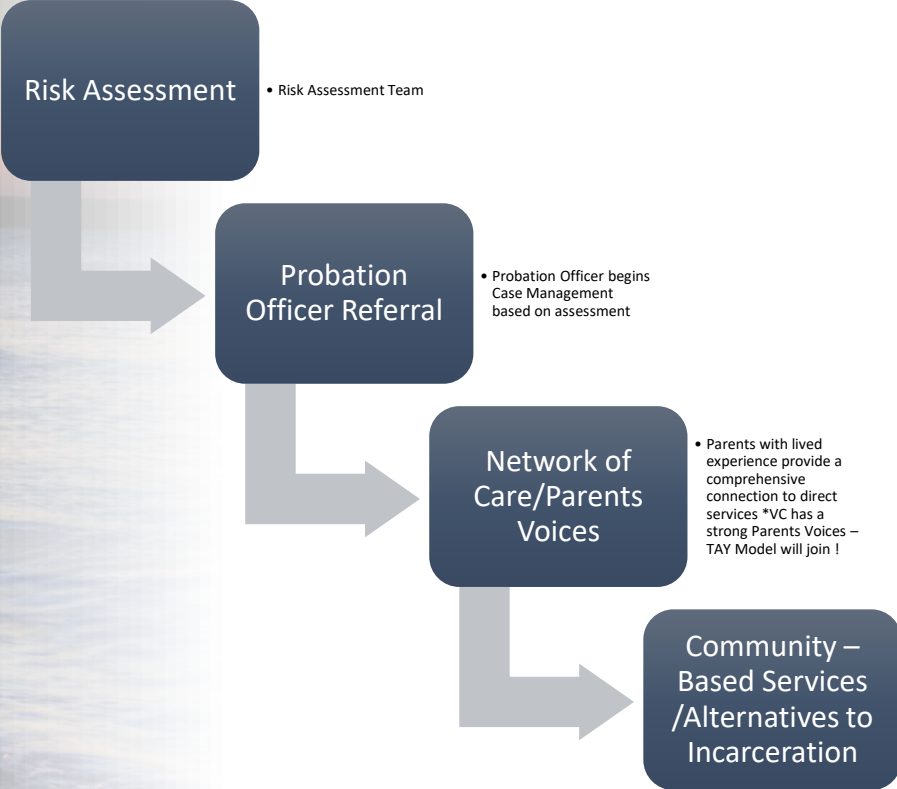
Research, Evaluation and Dissemination



NOC Program Model Child (Youth)/Family/School/ Community Model

- Holistic
- Timely
- Individualized
- Family-centered
- Strength-based
- Rehabilitative Focus/ Life-skills
- Resources and technical expertise shared across systems
- Continuity of supports during and post transition
- Sense of Agency and Positive Future

NOC Programming Process





Continuum of Programming JF-TAY Deepening of Programming all Levels

- Mental Health & Wellness
- Health-Holistic/ physical/ social-emotional/ cognitive/spiritual/cultural
- Growth & Development- TAY Development (Brain Maturation)
- Re-entry
- Recreation & Exercise- Community- Based Connections
- Religious Services (Faith-Based Connections)

- Housing
- Food
- Clothing
- Health care
- Education including academic placement assistance
- Employment/Training/Skills Development Program
- Financial Literacy
- Computer Literacy/Technology
- Social-Emotional Learning/anger management
- Mental health/psychosocial support
- Treatment programs
- Innovative therapeutic programs (art, music, biophilia)
- Emergency hotlines
- Community mentorship
- Support Groups
- Spiritual/Religion/Faith-based Connections
- Recreation and health
- Healthy Relationships
- Knowledge-based Parenting/CPTP
- Resources for abused/neglected youth
- Location monitoring in the community

Developmentally Responsive Programs and Services including opportunities for collaboration through the Multifaceted, Integrated Safety Program and Transforming and Empowering Lives To Build A Strong Community

- Mentoring Prosocial Activities
- Local Government
- Education/Employment
- Social Services
- Schools
- Family Support
- Health and Wellness
- Evidence-based Programs and Rehabilitation
- Courts
- Community

A dramatic sunset or sunrise over a parking lot. The sky is filled with dark, heavy clouds, with a bright, glowing sun breaking through in the center, creating a large, bright orange and yellow light source. The sun's rays illuminate the clouds, creating a gradient of colors from deep blue at the top to bright orange and yellow near the horizon. In the foreground, the silhouettes of palm trees and other vegetation are visible against the bright sky. Below the trees, a parking lot is filled with numerous cars, their forms also silhouetted against the light. A building with a gabled roof is visible in the background, partially obscured by the trees. The overall scene is a mix of dark and light, with a strong contrast between the dark silhouettes and the bright, glowing sun.

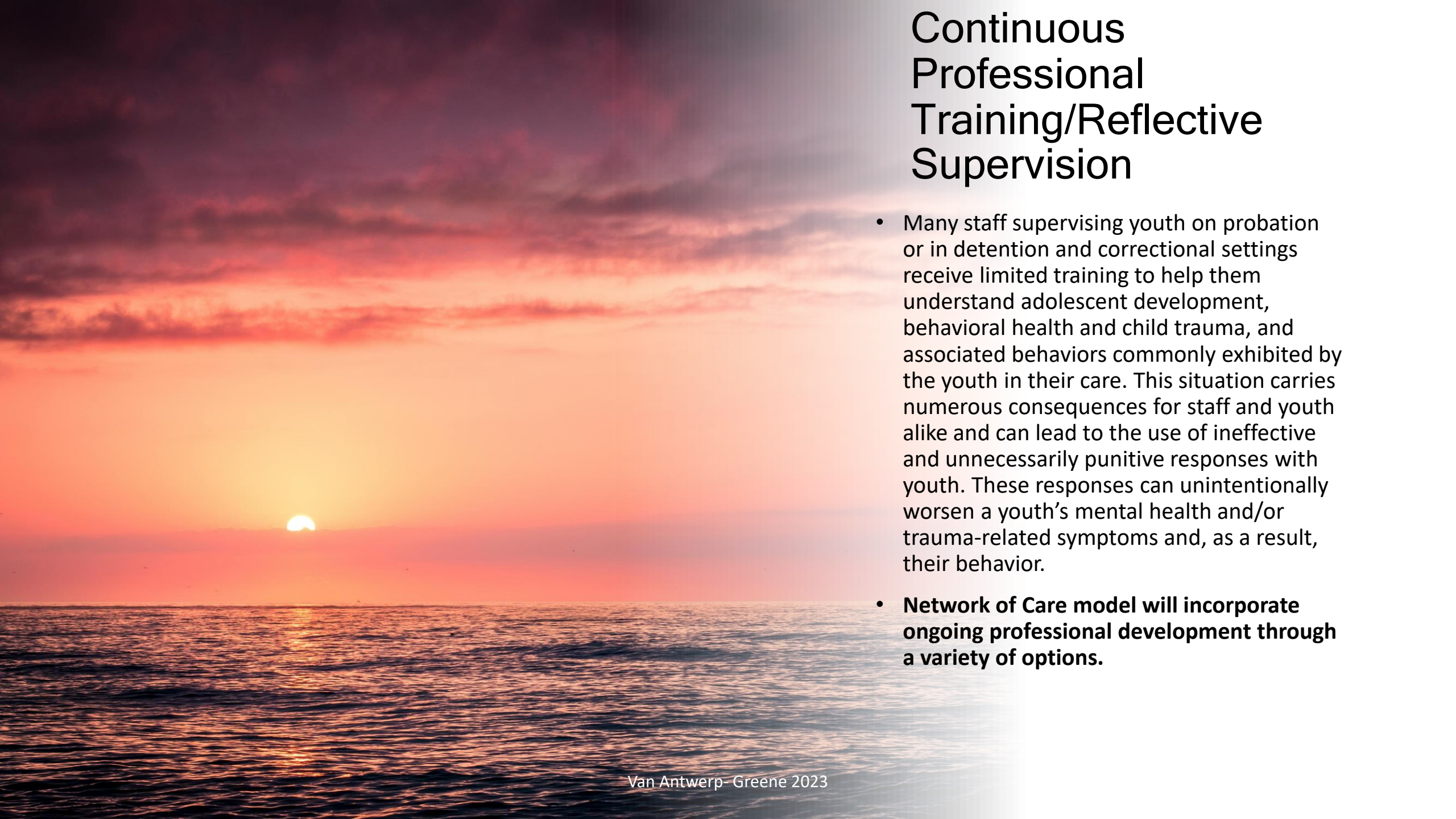
NOC/Care Provider Training

- 10-12 Content Experts
- Content based on training needs assessment survey
- Delivered virtually via zoom 1.5-2 hours in duration
- LIVE Spanish Interpretation
- Topics in all areas identified in TAY Programming
- Tracking of participants/participation
- Certificates available for completion of courses
- Example Topics:
 - Career Pathways
 - Life After Struggle
 - Coping & Communication
 - Parenting
 - The Wellness System

A large, powerful blue wave crashing over a rocky shore under a bright sky. The wave is curling over, creating a tunnel-like shape. The water is a vibrant turquoise color, and the sky is a clear, bright blue. The overall scene is dynamic and energetic.

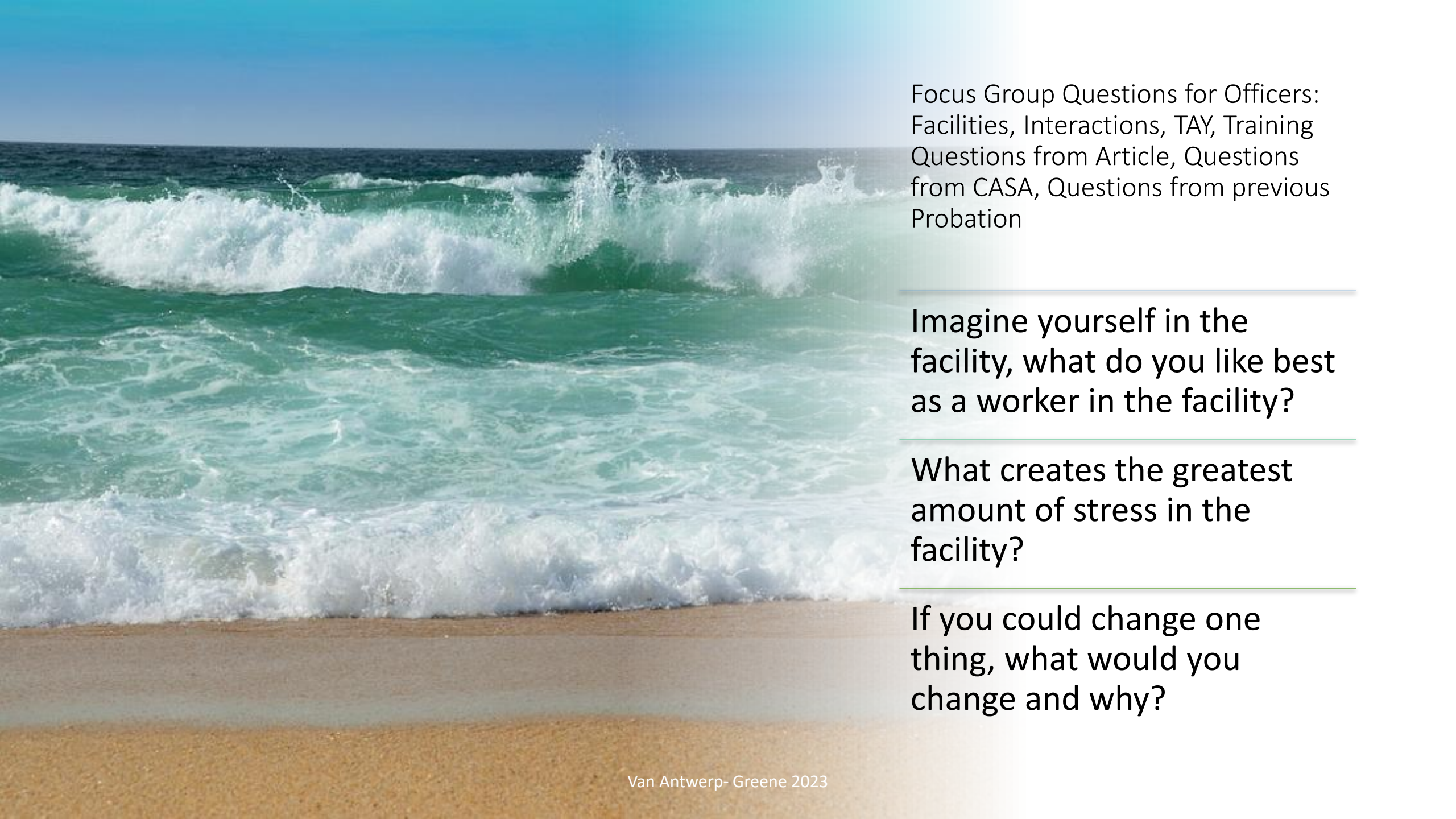
Focus Group
Categories/Implementation/CAPC

- Facilities- TAY as well as Officers
- Interactions-Relationships
- Environment
- Family Engagement
- Programming
- Community Partners
- Training/PD



Continuous Professional Training/Reflective Supervision

- Many staff supervising youth on probation or in detention and correctional settings receive limited training to help them understand adolescent development, behavioral health and child trauma, and associated behaviors commonly exhibited by the youth in their care. This situation carries numerous consequences for staff and youth alike and can lead to the use of ineffective and unnecessarily punitive responses with youth. These responses can unintentionally worsen a youth's mental health and/or trauma-related symptoms and, as a result, their behavior.
- **Network of Care model will incorporate ongoing professional development through a variety of options.**



Focus Group Questions for Officers:
Facilities, Interactions, TAY, Training
Questions from Article, Questions
from CASA, Questions from previous
Probation

Imagine yourself in the
facility, what do you like best
as a worker in the facility?

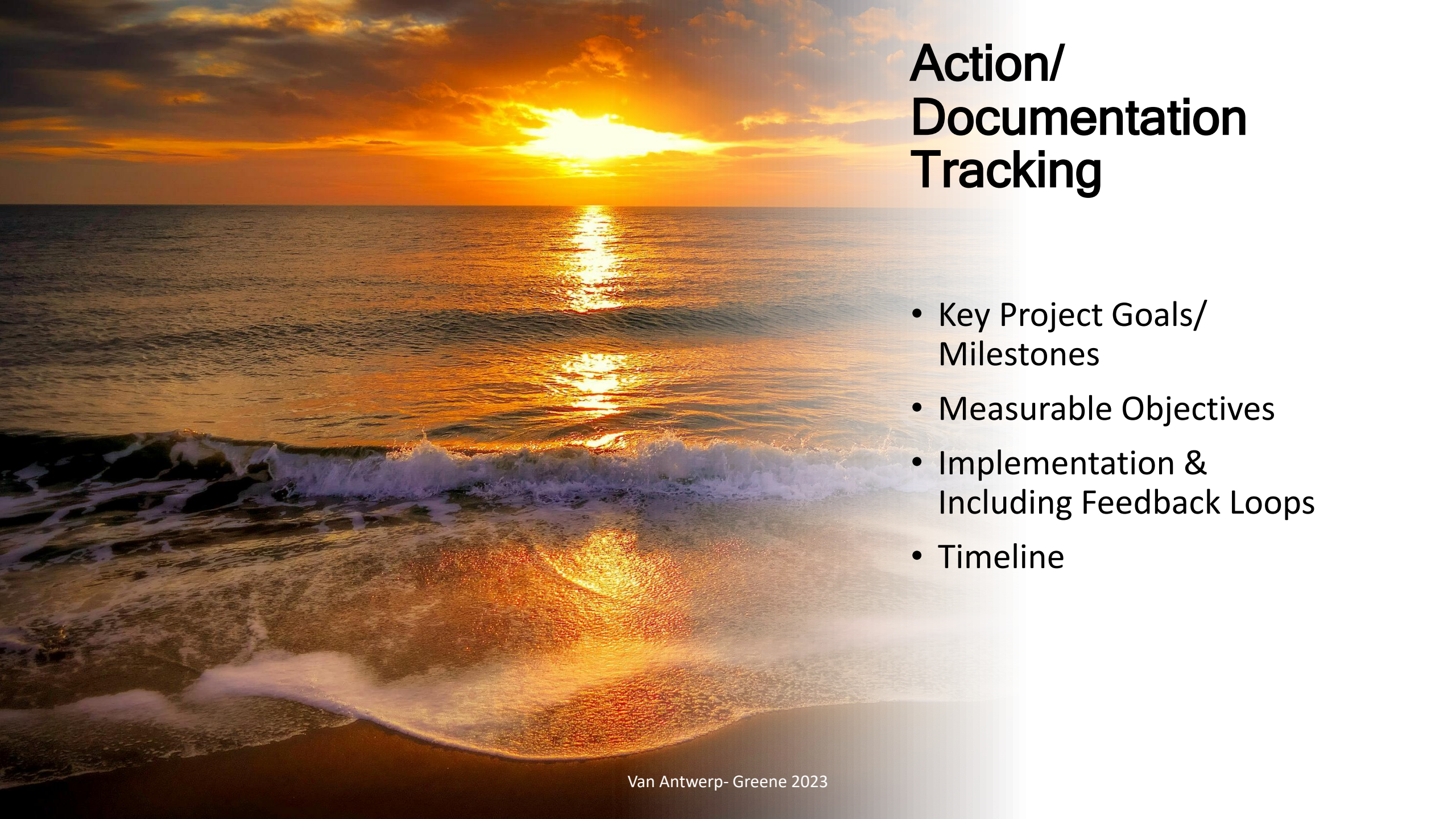
What creates the greatest
amount of stress in the
facility?

If you could change one
thing, what would you
change and why?



Most Pressing Issues in Re-entry Mitigated by Network of Care

- Several states report 55% of young people released from JJ are rearrested within a year
- Programs and models are limited, exhausted early on, lack relevance and skill building for positive and healthy outcomes for sustainable re-entry and re-integration in family, school, work, and larger community
- No clear plan
- Return to peer groups/ peer relationships
- Academic disengagement
- No employment
- Drugs
- Parents feeling helpless
- Youth trying to cope with issues of trust, fear, anxiety and impatience



Action/ Documentation Tracking

- Key Project Goals/
Milestones
- Measurable Objectives
- Implementation &
Including Feedback Loops
- Timeline

Network of Care Highlights

- Operates TAY Programming throughout Ventura County focused on moderate- high offenders.
- Serves approximately 100 TAY annually.
- Provides a presence and the active involvement of law enforcement in the lives of at-risk TAY, which is what makes our program so distinctive and effective.
- TAY are coached, tutored, mentored and supported by a Probation Officer whose full -time job is to case manage and support healthy transition.
- Offers comprehensive TAY programs designed to meet the social, emotional, cognitive and physical needs of TAY ages 18-25.
- Offers programs in communities with the highest rates of school drop outs, gangs, drugs, and violence.
- Fosters emotional well-being and resilience by providing safety, stability, and consistency to TAY which helps to build and strengthen core resiliency characteristics.
- Provides, on a monthly basis, an opportunity for TAY to participate in community service. Through volunteering and community involvement,
- Provides financial literacy and career exploration and experience.
- Youth learn that as citizens in a community, they have a responsibility to keep the community clean, safe and successful.



Network of Care

- Improves the lives of at risk and underserved children and families on a daily basis.
- Offers a safe and comprehensive TAY development programs, positive role models and access to a wide range of activities and resources
- Enhances academic and cognitive performance through tutoring, computer learning centers, the arts and the sciences.
- Stays closely connected to local school districts/colleges/vocational programs through collaboration and partnership.
- TAY learn that as citizens in a community, they have a responsibility to keep the community clean, safe and successful.
- Enables TAY to participate in our programs for multiple years, providing continuous support and healthy development.
- Creates opportunities for TAY to participate as mentors



Mitigating Identified Risk Factors

The risk factors listed by domain below have been identified across multiple sources.

- **Individual level:** Antisocial behavior such as vandalism, physical fighting, or substance use and behavioral health issues.
- **Family level:** Antisocial behavior or criminality/justice system involvement by parents, insufficient parental supervision, victimization or maltreatment of children, children's repeated exposure to family violence. • **Peer level:** Gang involvement, association with delinquent or aggressive peers.
- **School level:** Youth's poor academic performance and/or low commitment to school, school climate characterized by low levels of safety and bonding with teachers.
- **Community level:** Crime, poverty, availability of weapons, neighborhood disorganization

Tracking Network of Care Progress (outcomes)

Quarterly Reports-

Monthly Progress Review- Progress and barriers will be reviewed and potential adjustments discussed

Convened Learning Conversations-insights and information gained via insight into other's experiences (talking to each other)

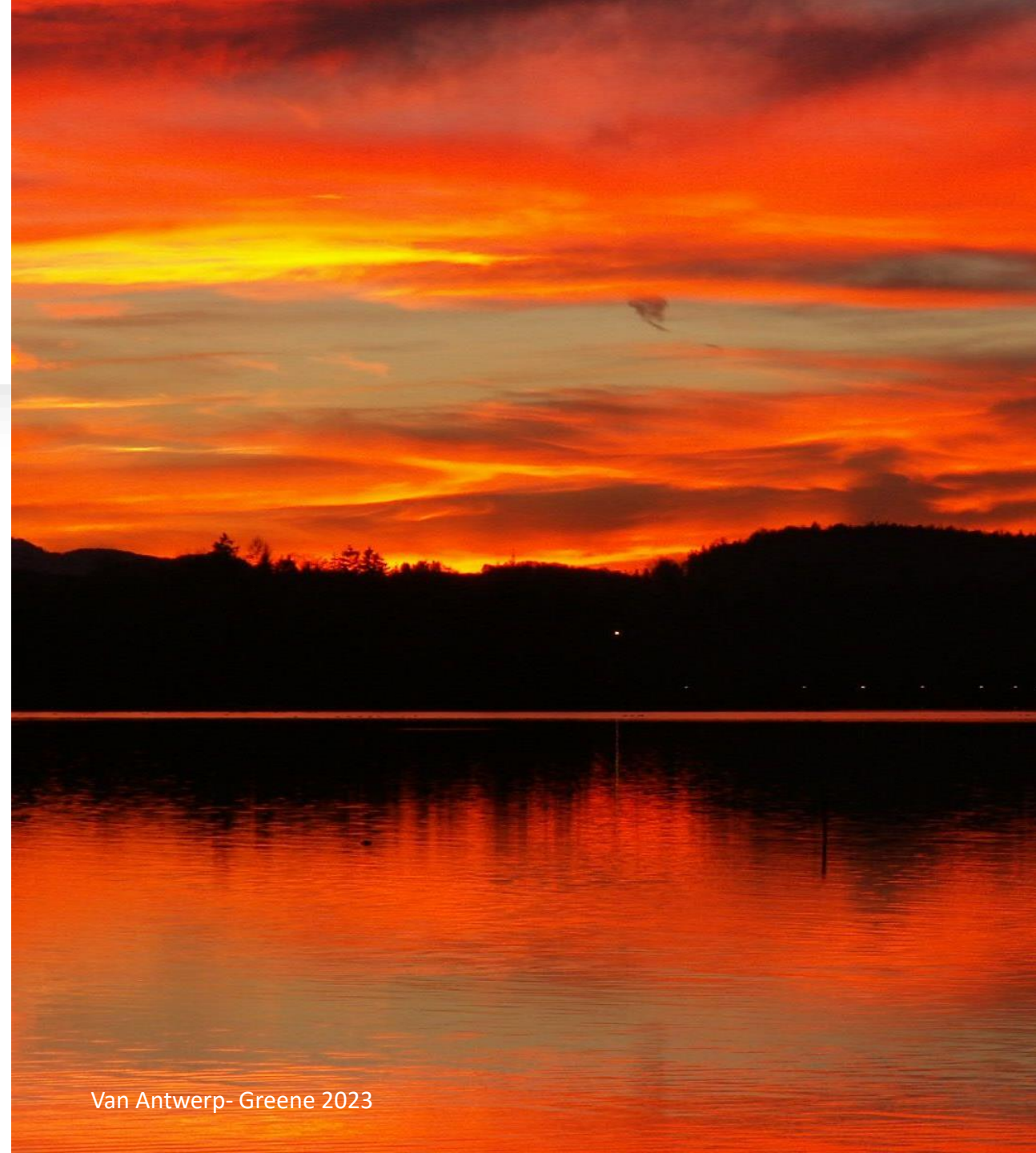
Annual Report-Integrate breakthroughs and success

Informal Conversations & Email Exchange – ongoing as needed basis



Key Aspects of VC Interagency Core Practice Model: What's Needed for Interagency Collaboration for Reintegration of Transition Age Youth

- Outreach & Engagement
- Deliver information, referral & assistance
- High-Quality, culturally grounded prevention and intervention
- Evidence –Based & Evidence –Informed Practices
- Celebrating transition-education & support





Transformative Call to Action

Document/ Publish Article/ OJJDP/JJIE

- [Police Must Learn About Child Development Before Working With At ...](#)
- [Juvenile Justice Information Exchange › 2018/01/22 › police-must-learn-about-child-development-before-..](#)
- [Law Enforcement, Child Development People Must Communicate ...](#)
- [Juvenile Justice Information Exchange › 2019/07/29 › code-switching](#)